

# SEE DIFFERENT

## Dynamita's SUMOGRAPH papercraft

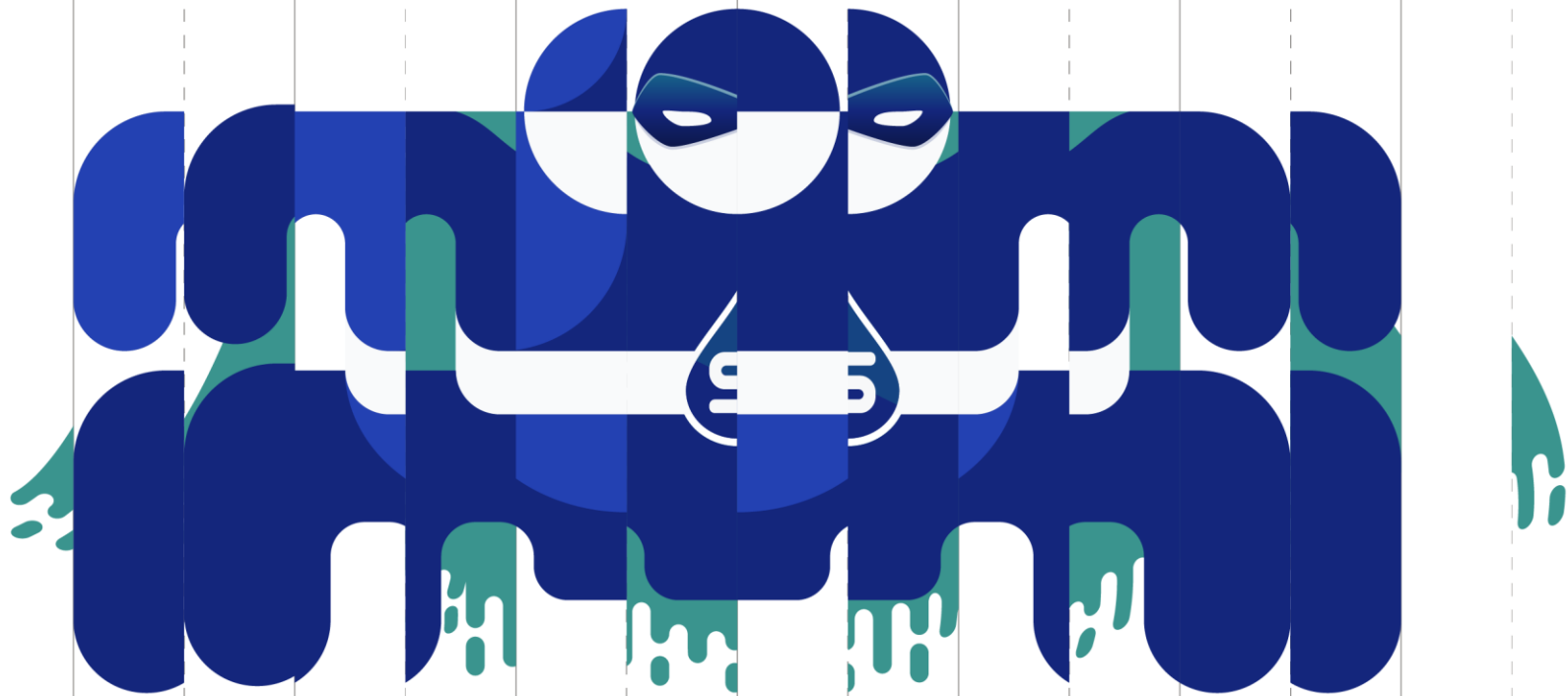
### REQUIREMENTS:

- 160 gsm paper
- ruler
- bone folder, dull knife, or empty ballpoint pen  
([Bone folder info](#))

### AFTER PRINTING:

1. Use the ruler and tool to fold along the lines.
2. Form the accordion shape with the creases, dashed lines for valleys, solid for mountains.
3. View the papercraft from different angles.





d'crynocosine s'ibutamo

PROCESS MODELING

